

# Implementing Medical Care Surveys

## Using DEP and Manipula

**Roberto Picha**

**Curtis Ziesing**

**15<sup>th</sup> IBUC, Sept 25<sup>th</sup> 2013, Washington DC**

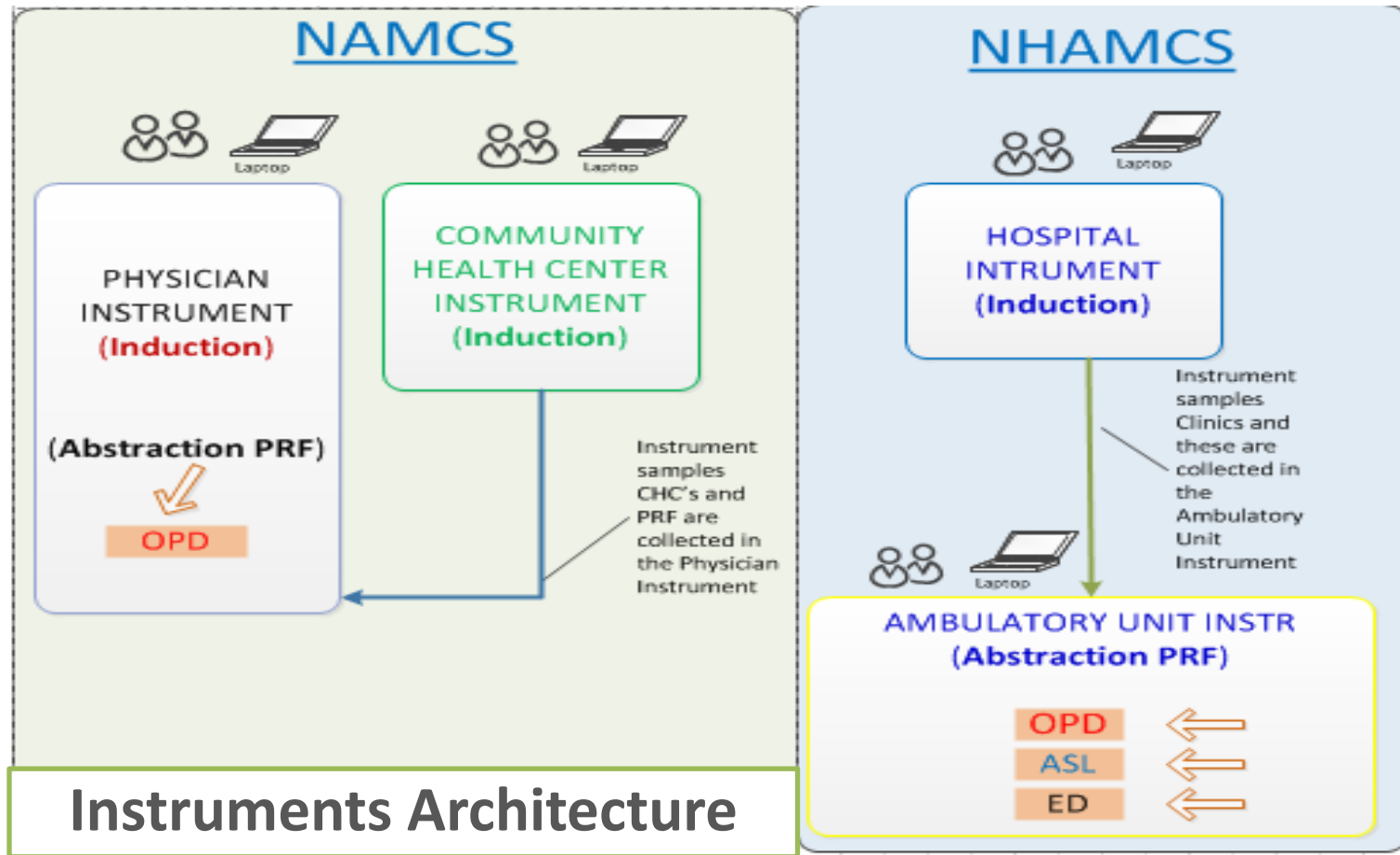
# Outline

- Introduction
- Requirements
  - Manipula for data collection
  - Modelibrary
  - Navigation
- Conclusions

# Introduction

- Instruments
  - NAMCS and NHAMCS
    - Office based - Doctors
    - Departments - Hospital
  - Relationship among these survey
    - Very similar and yet Different
    - Share same code for different instruments
- Architecture of PRF's
  - Relational approach
  - Flexibility to allow up large number of PRF's

# Introduction (cont)



# 2013 Ambulatory Health Care Survey Forms

## NAMCS

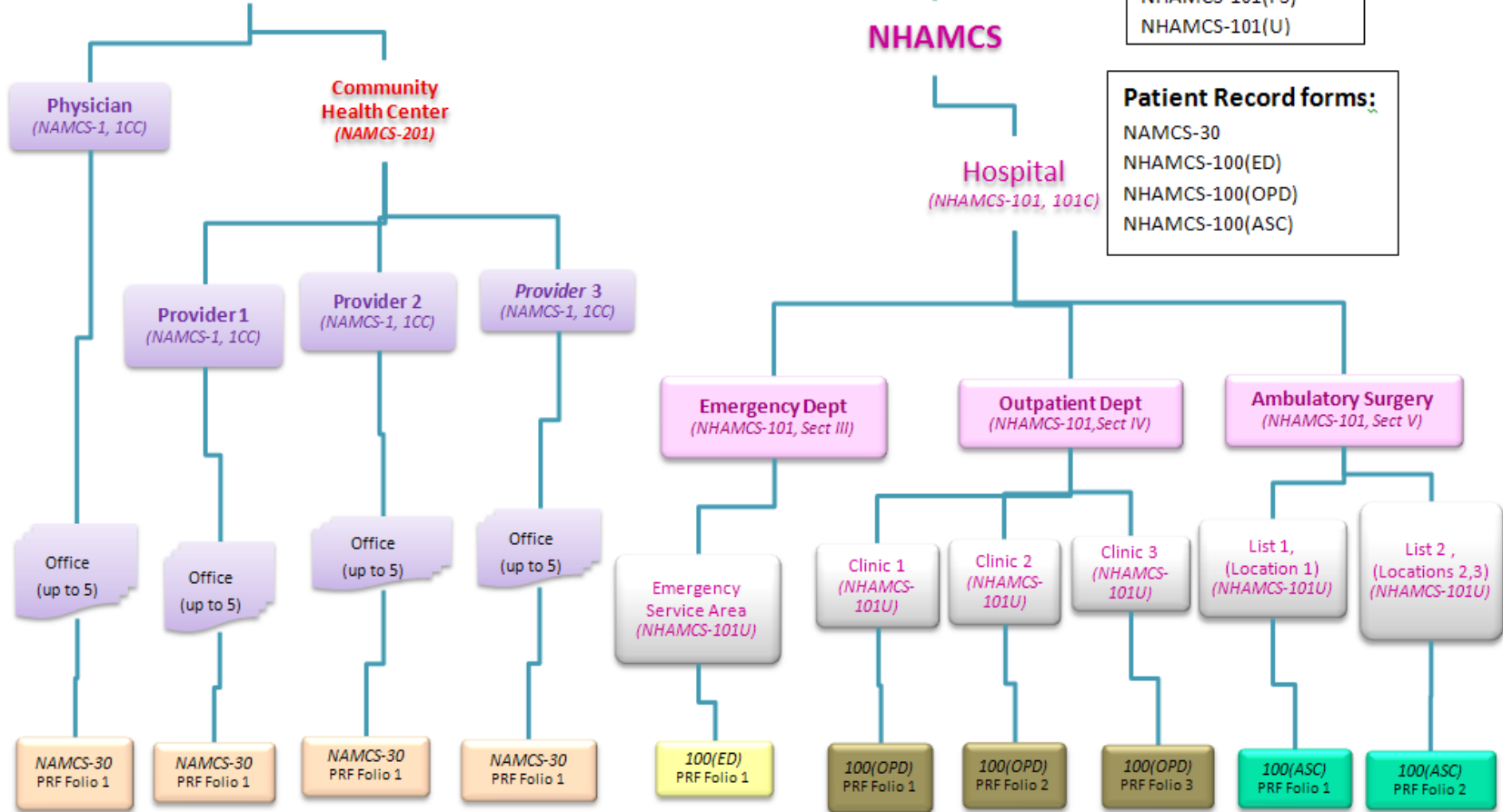
## NHAMCS

### Induction forms:

NAMCS-1  
 NAMCS-201  
 NHAMCS-101  
 NHAMCS-101(FS)  
 NHAMCS-101(U)

### Patient Record forms:

NAMCS-30  
 NHAMCS-100(ED)  
 NHAMCS-100(OPD)  
 NHAMCS-100(ASC)




# Manipula for data collection

- Updating same information at different times
  - Rules &. Function keys
    - First visit vs subsequent visits
  - The use of Dialog boxes
    - No need to duplicate variables
  - Some issues in the dialog boxes
    - Some work around implemented
- Parallel Tab and Dialog boxes
  - PRF's navigation
  - Menu navigation
- Other Uses
  - Contact information
  - Office schedule
  - Parameterized based on the survey
  - Sampling routine



# Manipula for data collection Cont.

- Manipula useful for:
  - Status of Patient Record Form 
    - Critical PRF information
    - Functionality to jump to PRF from report
- Data Collection of PRF in a relational approach
  - Handling large amount of forms, 150 per Department with a total of 450 PRF as total.

# Modelibrary

- Standard Screens until now
  - Three areas in the Infopane, Question text, Answer List & Formpane
  - Screen changing as data is collected
- Modifications
  - Expanding the controls and how they are used
    - Grid
      - Columns and Rows
    - InfoPane
      - Suppressing this control open others
    - Fieldpane
      - While a heavy work is done at front, this is re-usable



# Modelibrary Cont

Blaise 4.8 Model Library Editor - C:\NHAMCS\m201301\_AU\config\ModLibNHAMCS.bml

File Edit Navigate Tools Help

General

Name: F\_GRID\_Row02\_Col02\_

Description: Form

Fill order: Horizontal

Background: ...

Formpane border

Free Navigation

Sizes

View width: 116 View height: 22 Cell width: 62 Cell height: 3 Page width: 2 Page height: 4

Grid is used for a table

Grid displaying 2 columns and 4 rows

With a total of 8 questions on the form

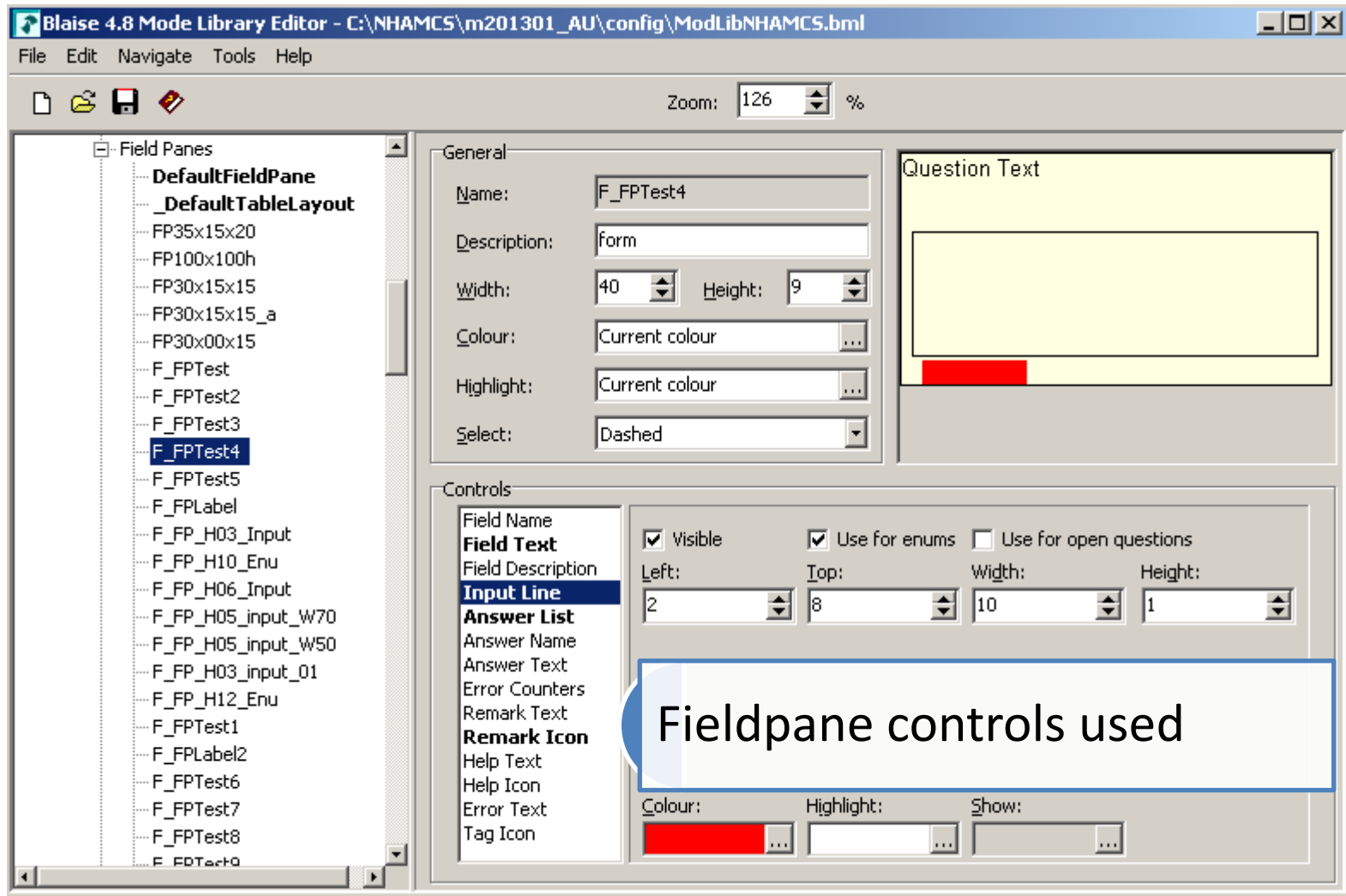
# Modelibrary Cont.

The screenshot shows the Blaise 4.8 Mode Library Editor interface. The title bar reads "Blaise 4.8 Mode Library Editor - C:\NHAMCS\m201301\_AU\config\ModLibNHAMCS.bml". The menu bar includes "File", "Edit", "Navigate", "Tools", and "Help". A toolbar contains icons for file operations and a "Zoom: 50%" dropdown. The left pane lists model identifiers, with "F\_INFOTest" selected. The right pane has tabs for "Layout", "Lookup", "Classify", "Long Open", "QuestionText", "Remarks", and "Errors". The "General" section includes fields for "Name" (F\_INFOTest), "Description" (form), "Position" (Top), and "Size" (0). There is an unchecked checkbox for "Infopane border". The "Controls" section lists "Field Text", "Answer List", and "Answer Info", with an unchecked checkbox for "Visible".

In order to get the paper form layout

Infopane is visible but no size is given

# Modelibrary Cont.



# Navigation

## Parallel tabs

National Hospital Ambulatory Medical Care Survey (NHAMCS) - Ver 3.08 8/28/2013

Forms Answer Navigate Options Help Show Watch Window

1 First 2 Prev 3 Next 4 Last 5 Add 6 Delete 7 Exit

NHAMCS FAQ Exit/F10 Patient Information Triage Reason for Visit Injury Diagnosis Diagnostics Medications Vitals Discharge Disposition

**1 of 2 PRF's**      **MRN: 11111**      **NHAMCS-100(ED) PATIENT INFORMATION**

	a. Date and time of visit	Date (MM/DD/YYYY)	Time (HH:MM AM/PM/ML)
♦ Enter the patient's medical record number <input type="text" value="11111"/>	(1) Date of Arrival	<input type="text"/>	<input type="text"/>
	(2) Seen by MD/DO/PANP ? [F1]	<input type="text"/>	<input type="text"/>
	(3) Date of ED departure, if released or transferred ? [F1]	<input type="text"/>	<input type="text"/>

# Navigation shortcuts

National Ambulatory Medical Care Survey (NAMCS-201) - Ver 3.00 9/9/2013

Forms Answer Navigate Options Help Show Watch Window

NAMCS\_CHC | FAQ | Exit/F10

**What is the correct address?**

♦ Enter 1 to update the CHC name, address, and phone

1. Enter 1 to update CHC information  
 2. Update complete, continue interview

Classify Center

Address Ver

New CHC Name

# Conclusion

- Utilizing Blaise Capabilities
  - DEP and Manipula a powerful combination
  - Open the doors to new layout Modelibrary
- Project was successful
  - Meet our sponsors expectations
- Moving forward
  - Implementing keystrokes in the Dialog boxes
  - Re-abtraction Instruments

# Contacts

Roberto Picha: [Roberto.v.picha@census.gov](mailto:Roberto.v.picha@census.gov)

Curtis Ziesing: [Curtis.ziesing@census.gov](mailto:Curtis.ziesing@census.gov)