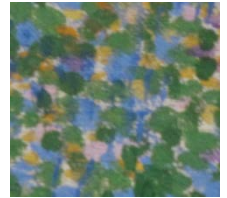


Making the most of Manipula-Maniplus

Fred Wensing
Independent IT contractor
Australia

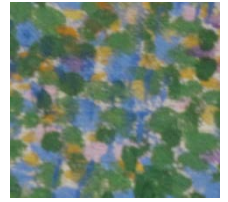


Overview of presentation



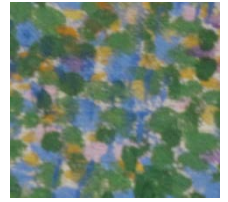
- Basics of Manipula
- Visible elements (Maniplus)
- Maniplus features
- Controlling programs
- Late binding
- Metadata access

Basics of Manipula



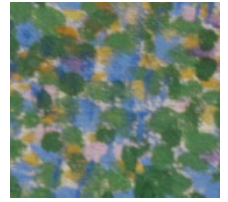
- Manipula can be used to process data
 - Combine
 - Derive
 - Sort
 - Filter
 - Report
 - generally Manipulate
- Most people only see and know the Wizard!

Basics of Manipula *(cont'd)*



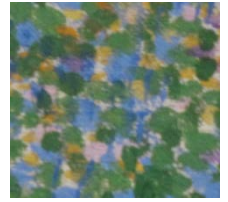
- Sections include:
 - SETTINGS
 - USES – to define datamodels
 - FILES – to define input/output/update files
 - AUXFIELDS – to define local fields
 - PROLOGUE – preparatory steps
 - MANIPULATE – applied logic

Basics of Manipula *(cont'd)*



- Sections can also include:
 - PROLOGUE – preparatory steps
 - PROCEDUREs - subroutines
 - SORT – for output text file
 - 2nd MANIPULATE STEP – more applied logic
 - PRINT – to define report headers and footers
- Summary data can be obtained
 - Useful for reporting

Main advantages



- Datamodel awareness
- Main file types
 - BDB
 - OLEDB via BOI
 - ASCII
 - ASCIIRelational
 - XML
- AUTO-copy of matched fields

Maniplus?

Extended functionality



Visible elements



- Dialogboxes (screens)
 - Text
 - Data fields
 - Lookups
 - Buttons
 - Graphics
- Made Visible or Enabled via Boolean expressions
- Menus as well

Other features



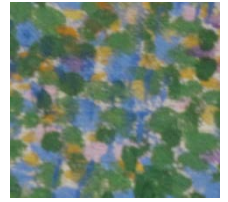
- Running other programs
 - CALL other Manipula-Maniplus programs
 - EDIT to run the Data Entry Program
 - RUN non-Blaise programs
- File handling
 - Delete, Copy, Move - files
 - Manage Blaise files
- Zip utilities

Controlling programs



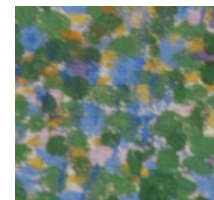
- Parameters
 - Tailoring
 - Passing information
- Command line options
 - In the call to the program
 - or by using a file
- INI file to define environment
- Start-up screen
 - Settings

Program independence



- Datamodel independence
 - Late binding – VAR option
 - Different statements to GET and PUT field values

Metadata access



- Get methods (some)
 - GETFIELDINFO – various attributes of a field
 - GETTYPEINFO – various attributes of a type
 - GETMETAINFO – information from the datamodel
 - GETNEXTFIELDNAME – next field in the block
 - GETNEXTROUTEFIELDNAME – next field on the route
- Can replace Cameleon

END

